



PLT uXXa MFT Multifunction Terminal Hardwaretype DELL OptiPlex 9020 Micro



Can be used as...

- MUX Terminal
- 800xA Terminal
- OIT / Process Portal B Terminal
- P14 Terminal (4/2015)
- Windows Terminal
- Subsystem Terminal

The 2 in 1 Solution

PLT Automation's new PLT MFT (Multifunction Terminal) gives you a high level of independence. Software and hardware are designed to connect the PLT MFT to various process control systems thus saving costs and easing maintenance as well as upgrading. This innovation offers a compact package of soft - and hardware.

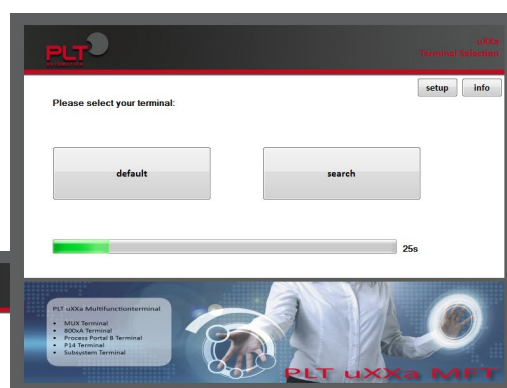
Based on the PLT MFT terminal, sessions with: Maestro UX, 800xA Process Portal B, P14 and other subsystems are possible. The setup of up to two different systems is possible, because of the use of an independant platform.

Benefits

- Connectable to the following PLS Systems:
 - ⇒ ABB Maestro UX
 - ⇒ ABB 800xA
 - ⇒ ABB OIT or Process Portal B
 - ⇒ ABB P14 Terminal (4/2015)
 - ⇒ Other System on request
- Dual operating System

Operation of two different applications. For example, MUX terminal on the first screen and on the second one an vision application is possible
- Plug and Play

Easy integration, by an automation setup to connect to an host server
- Standard Dell Hardware
- Space-saving and various mounting options



PLT Automation S.à r.l.
Zone Industrielle
L-6468 Echternach

phone: +352 26 72 34 - 1
fax: +352 26 72 34 - 34

E-Mail: info@plt-automation.lu
www.plt-automation.lu

One Step ahead



PLT uXXa MFT Multifunctional Terminal Hardwaretype DELL OptiPlex 9020 Micro



Hardware

Thanks to its compact housing, the Dell OptiPlex 9020 Micro is mountable to almost everything. With its different mounting points, the small OptiPlex fits everywhere. Furthermore it offers the safety and reliability you expect from Dell products. The operating system and the PLT Software are provided on a solid-state drive of industrial quality.

CPU:	Intel Core I5-4590T Processor (QUAD CORE)
Storage:	8GB (1X8GB) 1600MHZ DDR3L
Hard-Drive Connection:	2x SATA
Hard-Drive:	128GB 2.5 INCH SERIAL ATA SOLID STATE DR
Graphic ports:	2 x DisplayPort, 1 x VGA
Network ports:	Intel Dual Band Wireless-AC 7260 802.11 (1 x LAN, 1 x WLAN)
USB:	4x USB3.0 Rear, 2x USB2.0 Front
Power Supply:	65W AC Adapter
Dimensions:	183mm x 40mm x 192mm B/H/T
Ambient temperature range:	5°C to 35°C

Optional accessories:

- Dell OptiPlex Micro VESA-Mounting
- Dell OptiPlex Micro Console with DVD-RW
- Dell OptiPlex Micro Stand (Vertical)
- Dell OptiPlex Micro All-In-One-Mounting



Construction Notice

At least 1RU distance between other units. Do not stack multiple devices! The appliance must not be installed in a closed un-ventilated cabinet.

Notice Maestro UX

Monitor:

Approved monitor connections are Display-Port and VGA. The following resolutions are approved: 1920 x 1200, 1920 x 1080, 1600 x 1200 and 1280 x 1024, more resolutions available on request. Connecting of two Monitors on one MUX Sessions is not enabled.

Operator Console:

USB-mouse and PS2-mouse with PS2/USB-adapter are enabled. Following keyboard layouts are tested and approved: OPT-11 keyboard german (use of the smart card is not enabled), standard german keyboard layout, standard english keyboard layout, more keyboard layouts on request. The keyboards were tested according to the documentation: ABB Maestro TI 42/72-3000-2 EN "Operation an Observation"; (14.03.2000). The GUI of batch graphics and dispositions works perfectly as in older MUX X-Terminals only at a resolution of 1280 x 1024.

Maestro Versions:

Supported Maestro versions are: Maestro 2.6, and 2.7 B. Other Maestro versions are available on request.

PLT Automation S.à r.l.
Zone Industrielle
L-6468 Echternach

phone: +352 26 72 34 - 1
fax: +352 26 72 34 - 34
E-Mail: info@plt-automation.lu
www.plt-automation.lu

One Step ahead